

STSP Double Filter / Regulator

SITEK - DOUBLE FILTER / REGULATOR

Sitek Double Filter / Regulator is designed for filtration and regulation of compressed air before pneumatic devices and junction boxes.

Compact construction, including parallel filters / regulators and three way valve with one hand lever, facilitates easy on-line filter element change and secures trouble-free compressed air supply.

Sitek-Double Filter / Regulator is easy to install. It can be equipped with an output pressure gauge and a pressure switch to indicate the dirtyness of the filter / element in operation.

Filter Element has to be changed when the output pressure has decreased to the specified min. operation pressure.

1/2", 1 ... 5 µm



TECHNICAL DETAILS

Input / Output	1/2" G/R (NPT) (3/4" available)
Capacity	5,0 µm Cv 4,4
Operating pressure	max. 14 bar (max. 203 psi)
Regulator range	0 ... 14 bar
Temperature range	+ 5 ... 80 °C (+ 41 ... 176 °F)
Dimensions	220 x 350 x 280 mm

DOUBLE FILTERS / REGULATORS

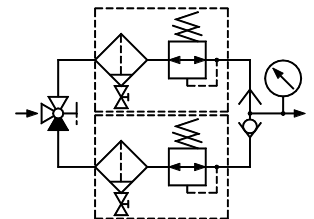
FILTER ELEMENT TYPE CODE

1,0 µm	STS P32 1G04M
3,0 µm	STS P32 3G04M
5,0 µm	STS P32 5G04M

SPARE FILTER TYPE CODE

1,0 µm	SFE-321
3,0 µm	SFE-323
5,0 µm	EKF32B

Standard construction: Drain Valve (Needle Valve), Mounting Bracket and Filter Element



OPTIONS

PART	TYPE CODE	DESCRIPTION	CODE FOR SPARES
Drain Valve	P	Ball valve 1/8"	SPV-R1/8U-1/8S
Pressure Gauge	PM	0 - 10 bar	SPM-10R1/4A50
Shut-Off Valve	P	Ball valve 1/4"	SPV-R1/4U-1/4S
Pressure Switch	PK	0,5 - 10 bar	DS1610400210100

TYPE CODE

OPTIONS

STS P325 G04M - P - PM - P- PK

Product Series

Filter Element

P321 1 µm

P323 3 µm

P325 5 µm

Connection **G04** G1/2

G06 G3/4

Pressure Switch

Shut-Off Valve for
Pressure Gauge

Pressure Gauge

P Drain Needle Valve
replaced by ball Valve



Sitek-Service Ltd.

Laukaantie 4

Hatanpäänvaltatie 34 A

E-mail: sitek@sitek.fi

40320 Jyväskylä Finland

33100 Tampere Finland

www.sitek.fi

Tel. +358 14 337 2300

Tel. +358 3 265 4069

Dimensions

